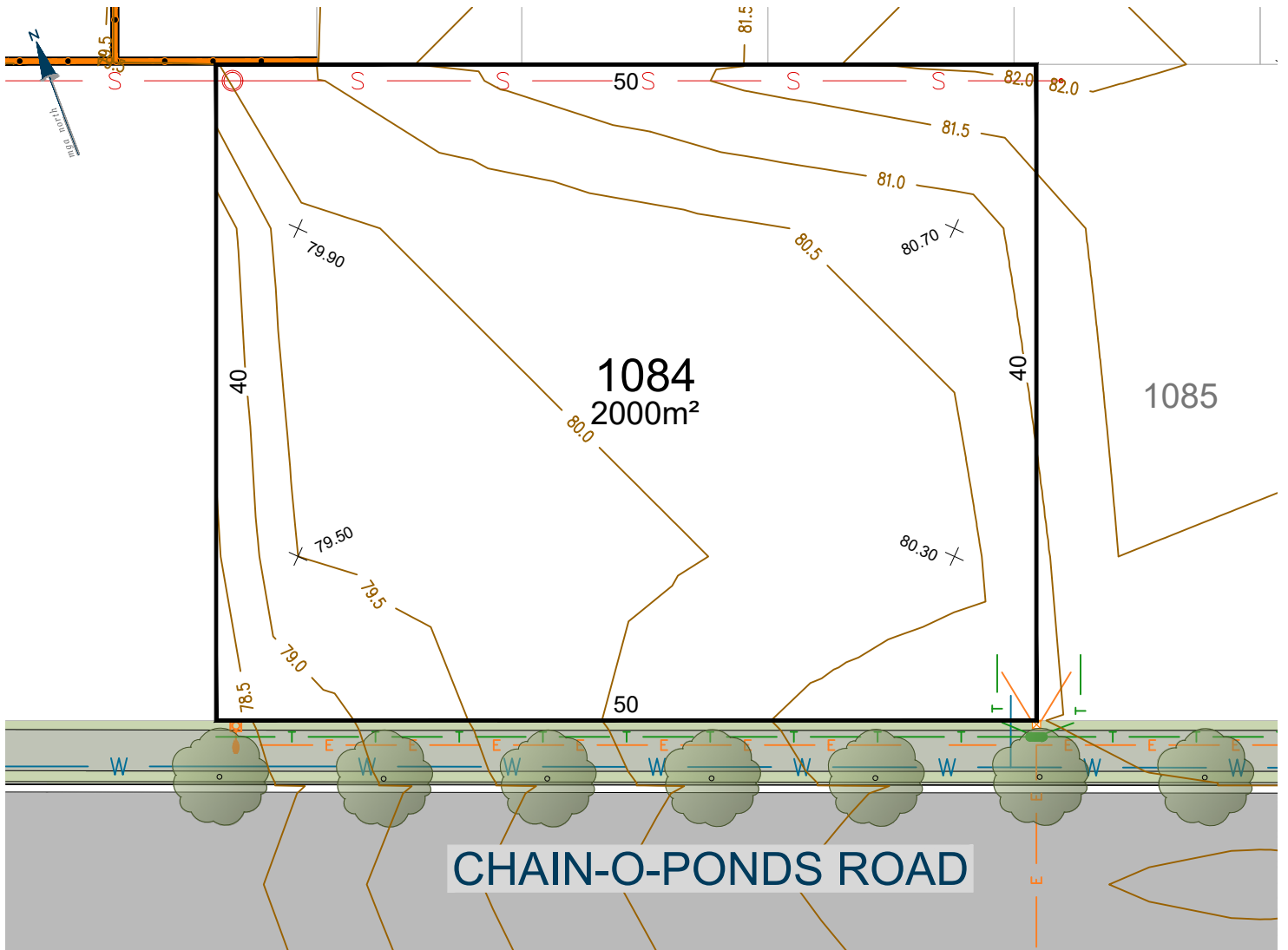
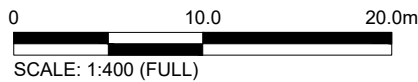


# Lot 1084

# EVERDENE MULGOA

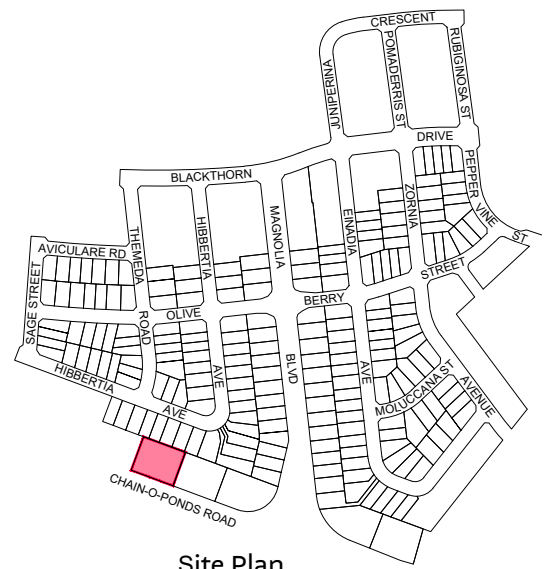


Ver.	Date	Comment	Company	By
B	13/04/26	C4 LOTS	ADWJ	JJ



CONTOUR INTERVAL 0.5m

Legend	
	Subject Boundary
	Adjoining Boundary
	Sewer Main
	Sewer Man Hole \ Maintenance Chamber
	Water Main
	Water Hydrant
	Water Stop Valve
	Telecommunications Line
	Telecommunications Pit
	Street Tree
	Footpath
	Easements
	Proposed Finished Surface Levels
	Electricity Services
	Street Light
	Electrical Pillar
	Electrical Kiosk
	Stormwater Pipe
	Stormwater Lintel
	Stormwater Drainage Pit
	Stormwater Junction Pit
	Design Contours
	Block Work Retaining Wall
	Concrete I-beam Retaining Wall



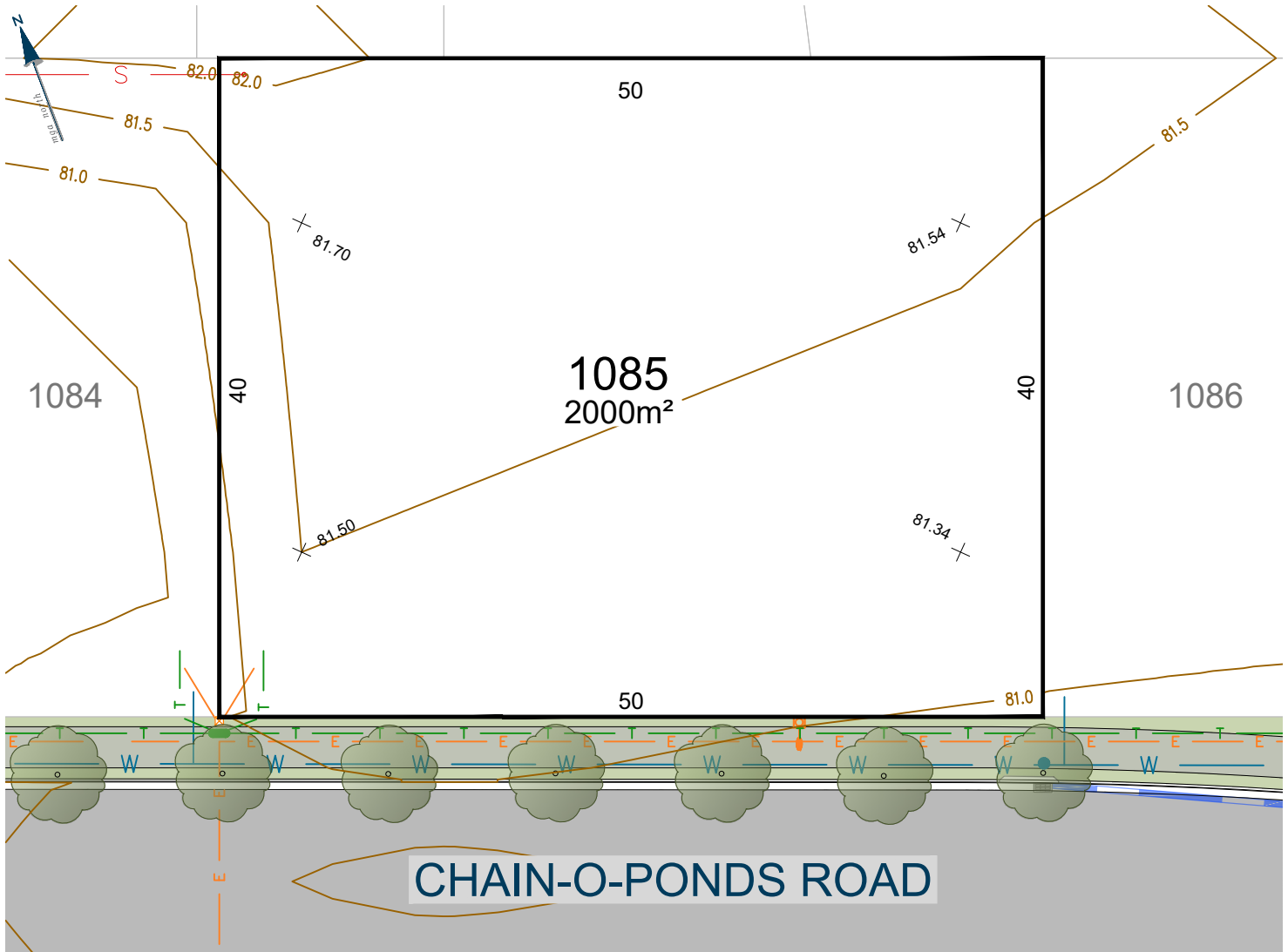
9080 8599  
EVERDENE.MIRVAC.COM



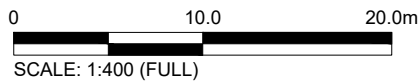
Notes:  
The information shown on this plan is indicative only, and has been prepared with care and final outcomes may vary, however it is subject to change in accordance with the contract. The depictions on the plan do not necessarily reflect final designs which require the input and approval of various authorities. Changes may be made at any time without notice (subject to contract). Purchasers must rely on their own enquiries. 17th September 2025.

# Lot 1085

EVERDENE  
MULGOA

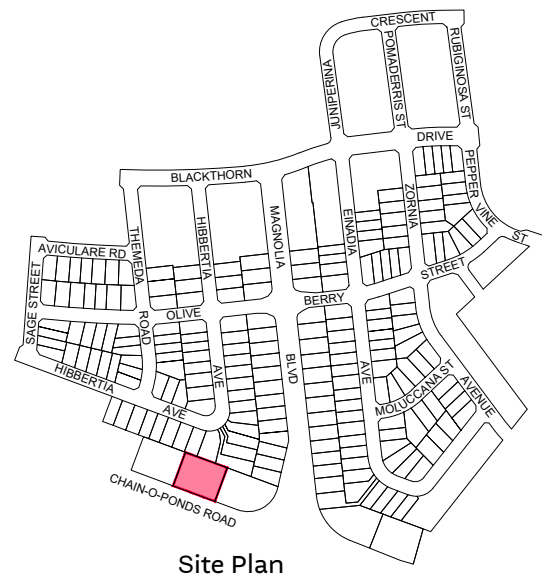


Ver.	Date	Comment	Company	By
B	13/04/26	C4 LOTS	ADWJ	JJ



CONTOUR INTERVAL 0.5m

Legend	
	Subject Boundary
	Adjoining Boundary
	Sewer Main
	Sewer Man Hole \ Maintenance Chamber
	Water Main
	Water Hydrant
	Water Stop Valve
	Telecommunications Line
	Telecommunications Pit
	Street Tree
	Footpath
	Easements
	Proposed Finished Surface Levels
	Electricity Services
	Street Light
	Electrical Pillar
	Electrical Kiosk
	Stormwater Pipe
	Stormwater Lintel
	Stormwater Drainage Pit
	Stormwater Junction Pit
	Design Contours
	Block Work Retaining Wall
	Concrete I-beam Retaining Wall



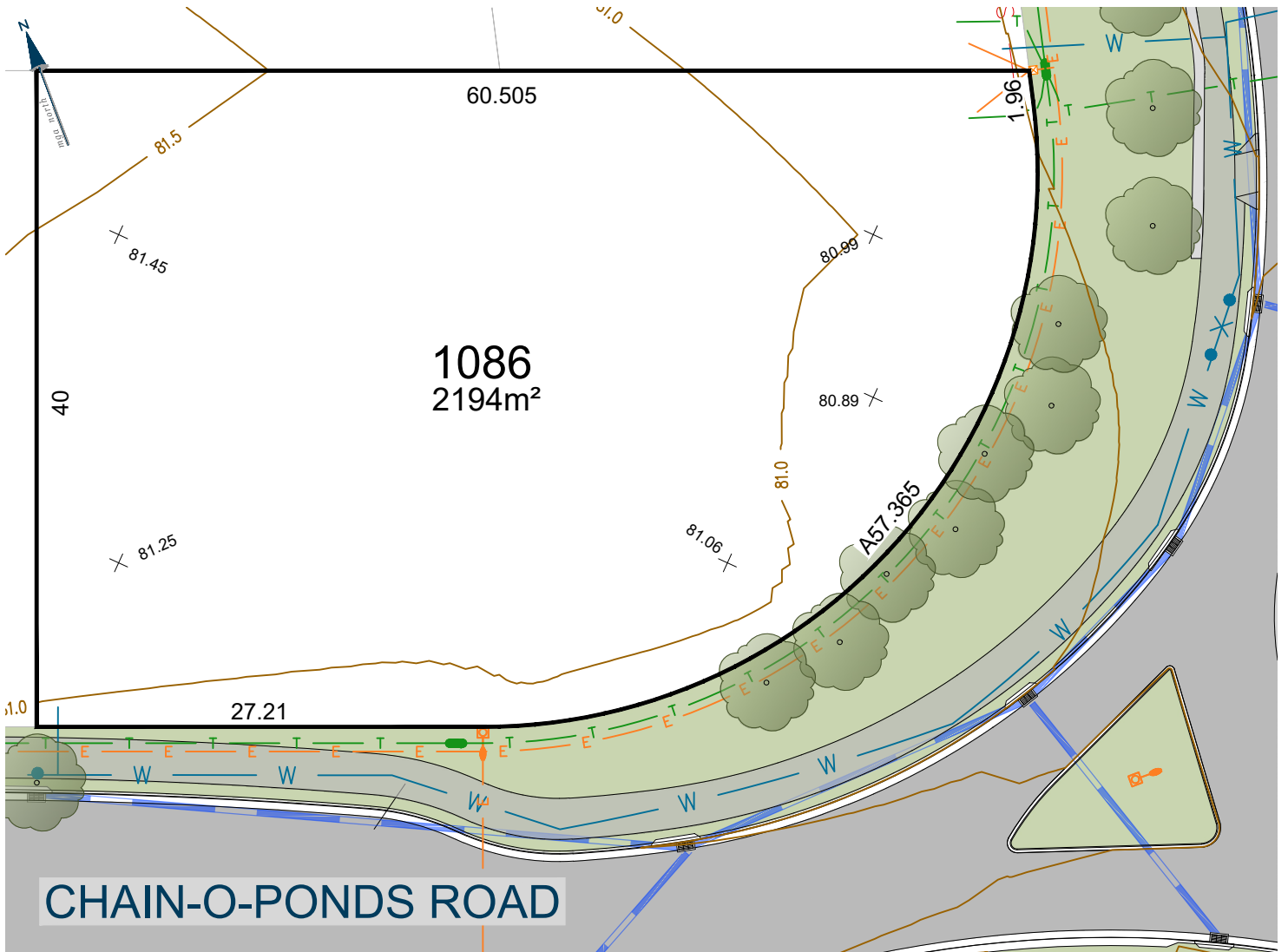
9080 8599  
EVERDENE.MIRVAC.COM



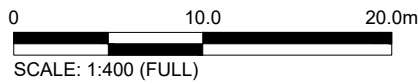
Notes:  
The information shown on this plan is indicative only, and has been prepared with care and final outcomes may vary, however it is subject to change in accordance with the contract. The depictions on the plan do not necessarily reflect final designs which require the input and approval of various authorities. Changes may be made at any time without notice (subject to contract). Purchasers must rely on their own enquiries. 17th September 2025.

# Lot 1086

# EVERDENE MULGOA

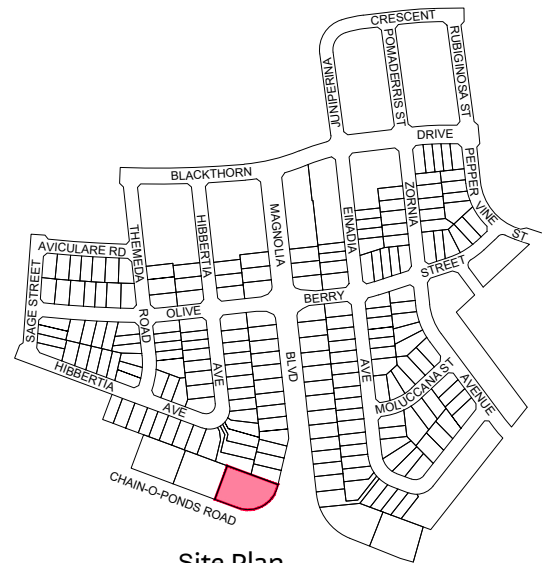


Ver.	Date	Comment	Company	By
B	13/04/26	C4 LOTS	ADWJ	JJ



CONTOUR INTERVAL 0.5m

Legend	
	Subject Boundary
	Adjoining Boundary
	Sewer Main
	Sewer Man Hole \ Maintenance Chamber
	Water Main
	Water Hydrant
	Water Stop Valve
	Telecommunications Line
	Telecommunications Pit
	Street Tree
	Footpath
	Easements
	Proposed Finished Surface Levels
	Electricity Services
	Street Light
	Electrical Pillar
	Electrical Kiosk
	Stormwater Pipe
	Stormwater Lintel
	Stormwater Drainage Pit
	Stormwater Junction Pit
	Design Contours
	Block Work Retaining Wall
	Concrete I-beam Retaining Wall
	Entry Statement



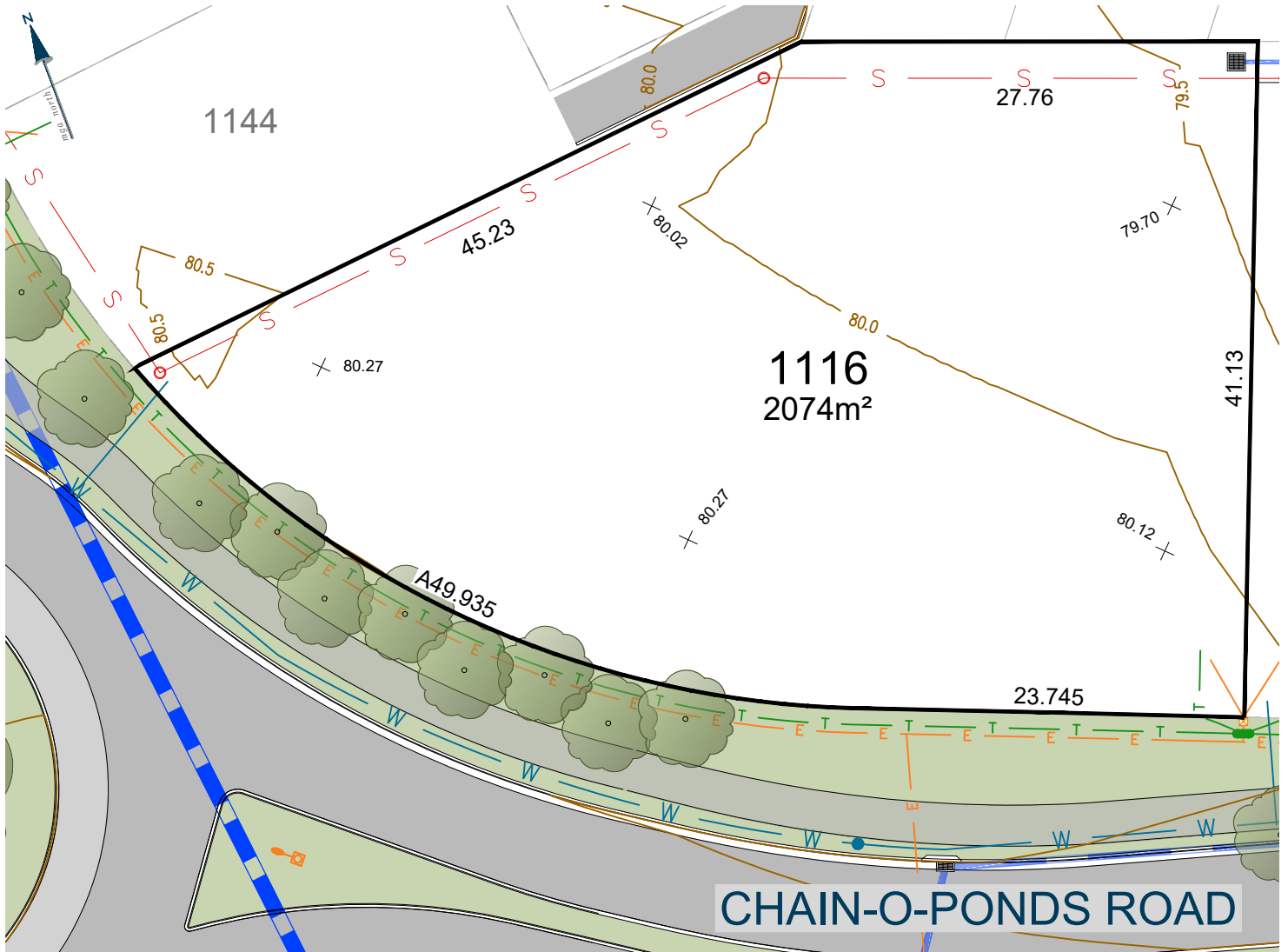
9080 8599  
EVERDENE.MIRVAC.COM



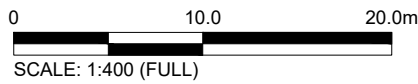
Notes:  
The information shown on this plan is indicative only, and has been prepared with care and final outcomes may vary, however it is subject to change in accordance with the contract. The depictions on the plan do not necessarily reflect final designs which require the input and approval of various authorities. Changes may be made at any time without notice (subject to contract). Purchasers must rely on their own enquiries. 17th September 2025.

# Lot 1116

EVERDENE  
MULGOA

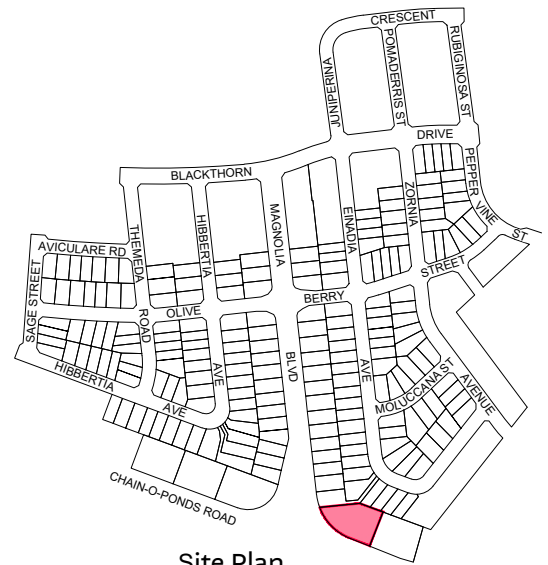


Ver.	Date	Comment	Company	By
B	13/04/26	C4 LOTS	ADWJ	JJ



CONTOUR INTERVAL 0.5m

Legend	
	Subject Boundary
	Adjoining Boundary
	Sewer Main
	Sewer Man Hole \ Maintenance Chamber
	Water Main
	Water Hydrant
	Water Stop Valve
	Telecommunications Line
	Telecommunications Pit
	Street Tree
	Footpath
	Easements
	Proposed Finished Surface Levels
	Electricity Services
	Street Light
	Electrical Pillar
	Electrical Kiosk
	Stormwater Pipe
	Stormwater Lintel
	Stormwater Drainage Pit
	Stormwater Junction Pit
	Design Contours
	Block Work Retaining Wall
	Concrete I-beam Retaining Wall



Site Plan

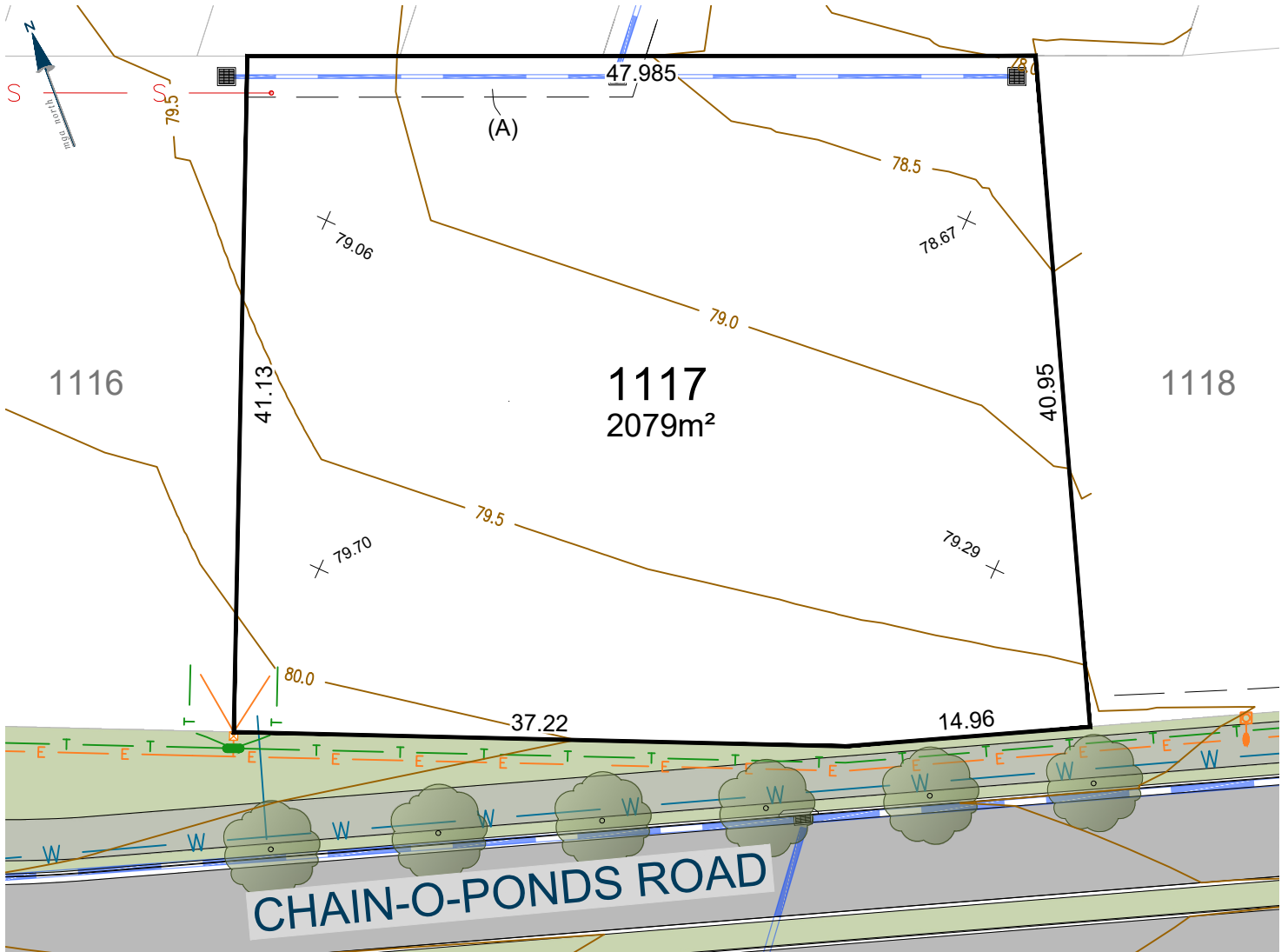
9080 8599  
EVERDENE.MIRVAC.COM



Notes:  
The information shown on this plan is indicative only, and has been prepared with care and final outcomes may vary, however it is subject to change in accordance with the contract. The depictions on the plan do not necessarily reflect final designs which require the input and approval of various authorities. Changes may be made at any time without notice (subject to contract). Purchasers must rely on their own enquiries. 17th September 2025.

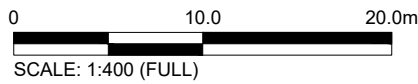
# Lot 1117

EVERDENE  
MULGOA



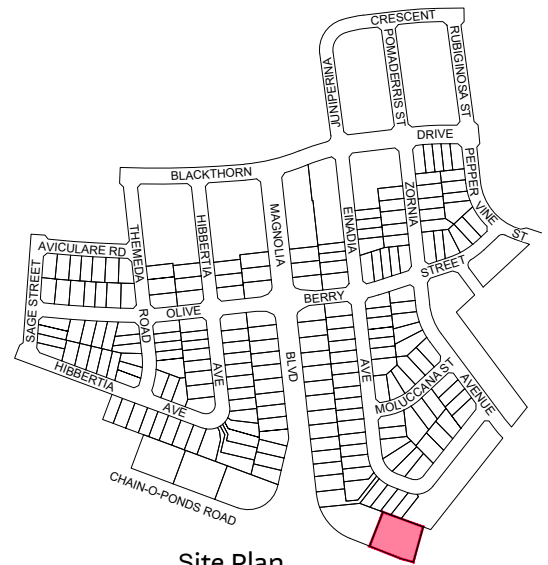
(A) EASEMENT TO DRAIN WATER 2, 2.5, 3 WIDE AND VARIABLE WIDTH

Ver.	Date	Comment	Company	By
B	13/04/26	C4 LOTS	ADWJ	JJ



CONTOUR INTERVAL 0.5m

Legend	
	Subject Boundary
	Adjoining Boundary
	Sewer Main
	Sewer Man Hole \
	Maintenance Chamber
	Water Main
	Water Hydrant
	Water Stop Valve
	Telecommunications Line
	Telecommunications Pit
	Street Tree
	Footpath
	Easements
	Proposed Finished Surface Levels
	Electricity Services
	Street Light
	Electrical Pillar
	Electrical Kiosk
	Stormwater Pipe
	Stormwater Lintel
	Stormwater Drainage Pit
	Stormwater Junction Pit
	Design Contours
	Block Work Retaining Wall
	Concrete I-beam Retaining Wall



Site Plan

9080 8599  
EVERDENE.MIRVAC.COM



Notes:  
The information shown on this plan is indicative only, and has been prepared with care and final outcomes may vary, however it is subject to change in accordance with the contract. The depictions on the plan do not necessarily reflect final designs which require the input and approval of various authorities. Changes may be made at any time without notice (subject to contract). Purchasers must rely on their own enquiries. 17th September 2025.